

USB-FPA Driver Installation

Software installation program is placing the USB driver files in the Elprotronic directory that is by default

C:\Program Files\Elprotronic\Drivers USB-FPA

These directory contains drivers for different Windows OS in following subdirectories

W98SE - for Windows 98 Second Edition
WinME - for Windows Millenium
W2K - for Windows 2000 (32-bits)
XP,Vista,Win-7 - for Windows XP (32/64 bits), Vista (32/64 bits) and Win-7 (32/64 bits)

- 1 Plug in USB- FPA adapter to PC USB Port, using provided cable extender (USB-A to USB-B).

==== Windows XP(64-bits), VISTA (64 bits), Win-7 (64-bits) ====

When the adapter is plug-in then in the **Windows XP** and **VISTA** the wizard will start to install the new hardware. Unfortunately, in **Win-7** the wizard is not activated. Only the message that the hardware was not installed successfully is displayed (Figure 1).

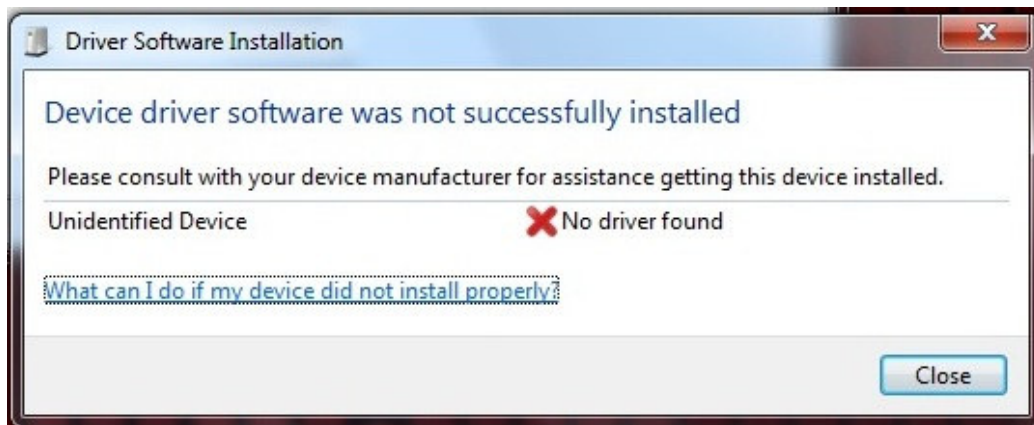


Figure 1

To start the wizard it should be opened the Device Manager and the driver for the unknown new device should be updated. Make a following steps to access the Device Manager

1. Press the **Windows START Menu** and select **Control Panel** (Figure 2).
2. Select **System and Security** (Figure 3)
3. Select **Systems** (Figure 4)
4. Select **Device Manager** (Figure 5)

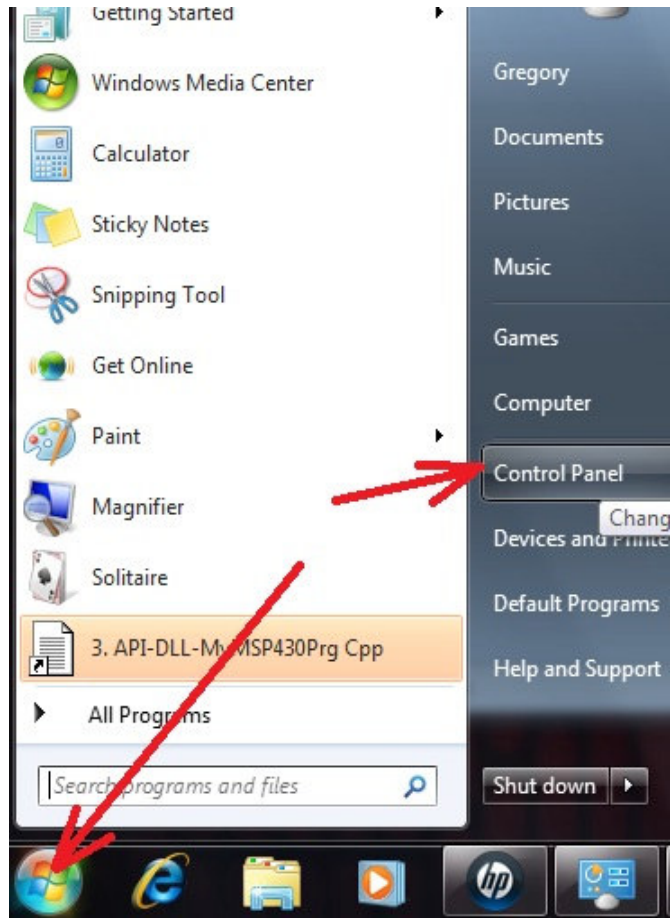


Figure 2

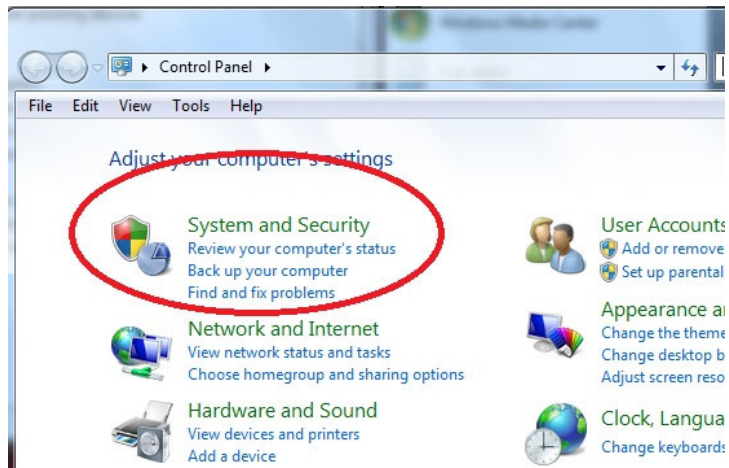


Figure 3

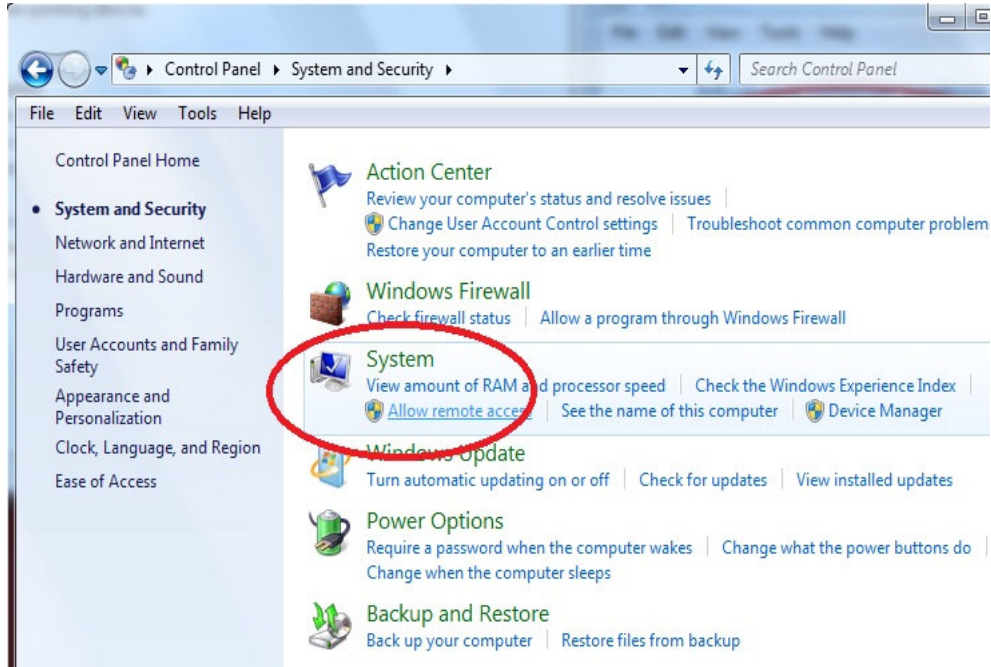


Figure 4

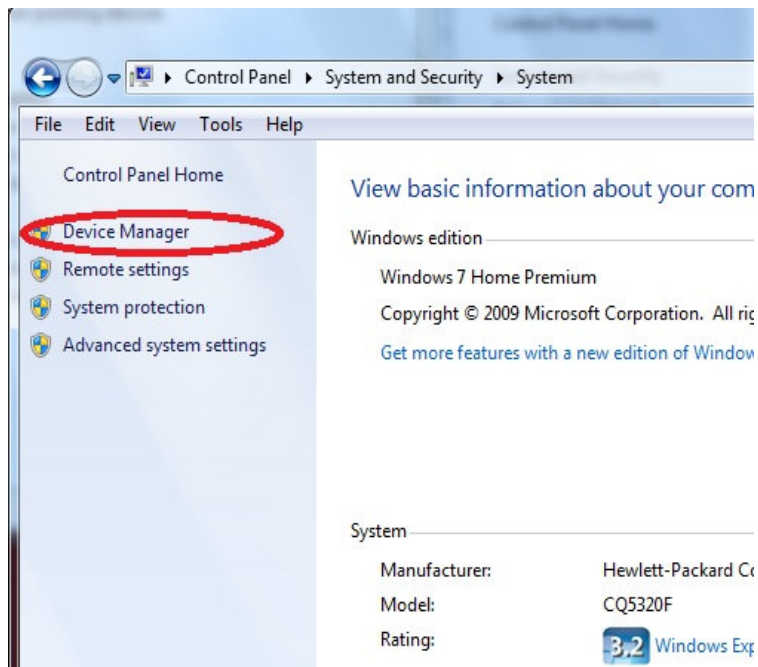


Figure 5

In the *Device Manager* (Figure 6) should be shown an Unknown device in the Other Device group with yellow question mark (warning).

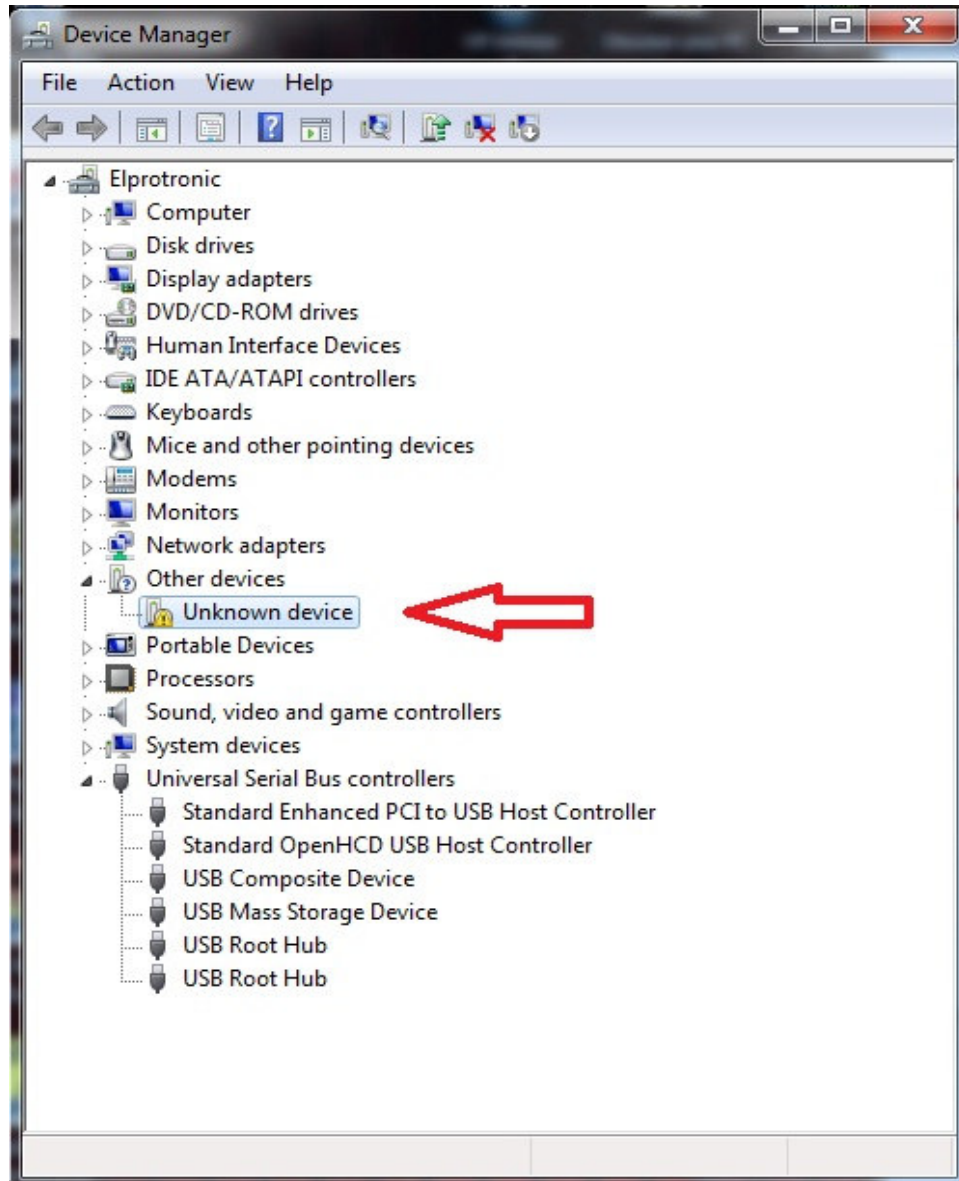


Figure 6

To make sure that the unknown device is the USB-FPA adapter, select unknown device and click right button on the mouse and select *Properties* and select *Drivers Details* (Figure 7).

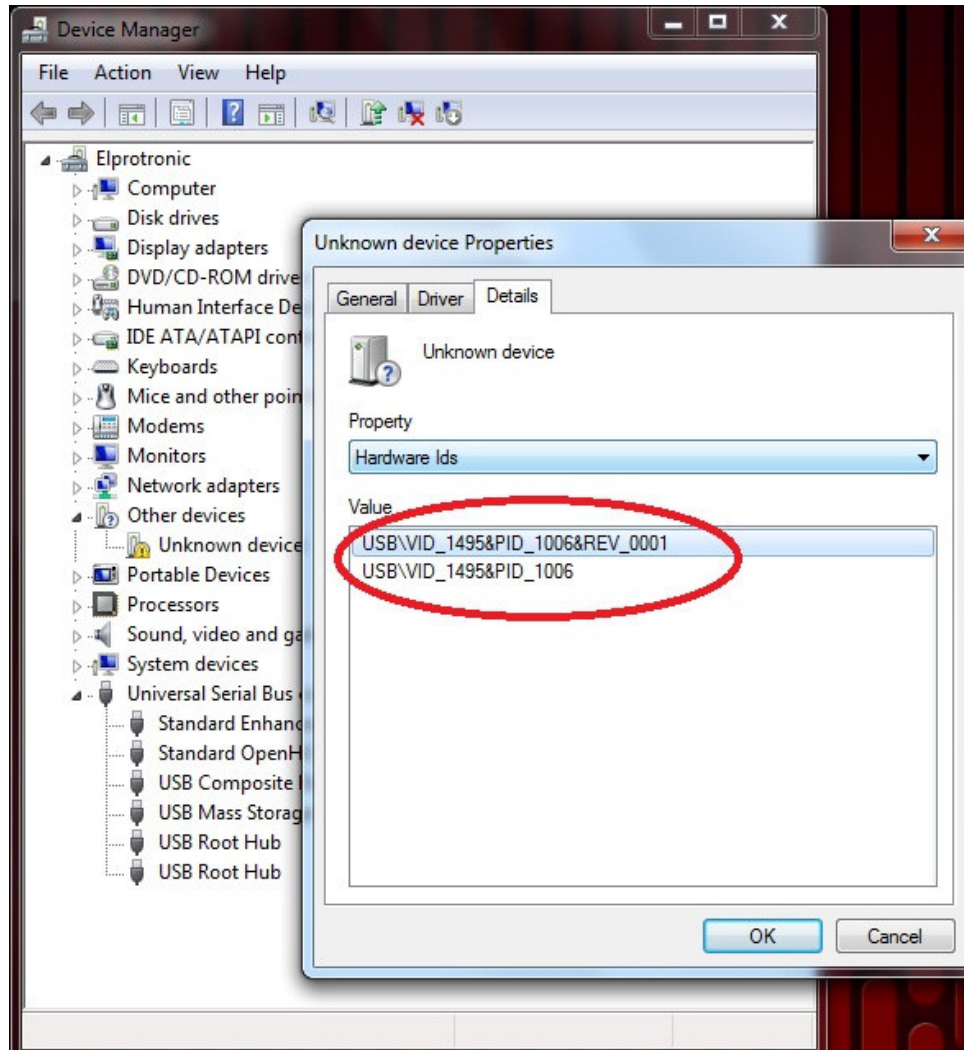


Figure 7

It should be displayed Vendor ID -> **VID_1495** where 1495 is the Elprotronic's USB VID number. PID (product ID) number is 1006 and it is related to USB-FPA BOOT driver. When these numbers are displayed then select **Driver** tabulation and press **Update Driver** button (Figure 8)

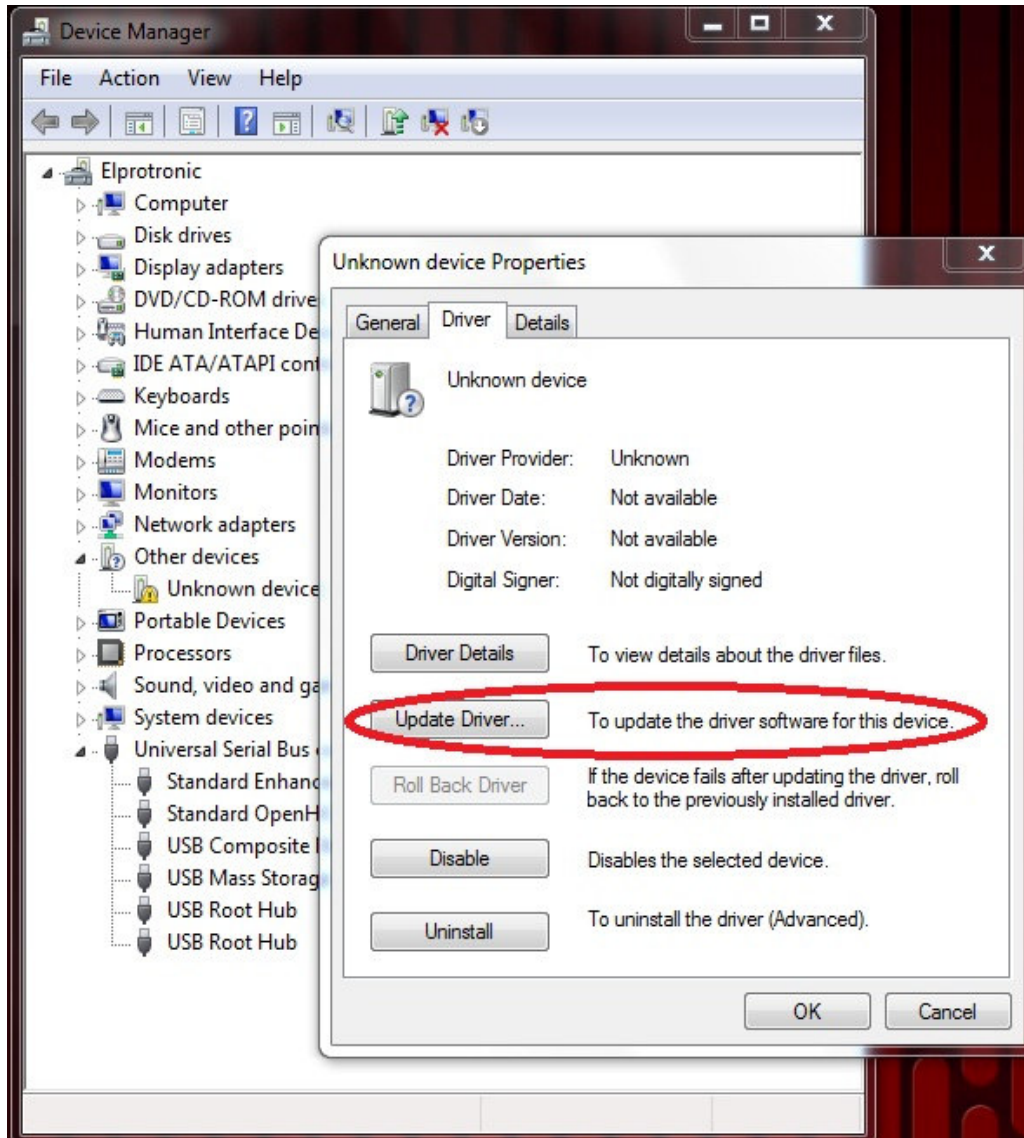


Figure 8

When the **Update Driver** is pressed then Hardware Wizard is activated for driver installation. From now the procedure is the same for XP64, Vista64 and Win-7 64.

In the first Wizard pop-up screen select an option

Browse my computer for driver software

(Figure 9) and in the next pop-up screen provide a following drivers software location using **Browse** button

C:\Program Files (x86)\Elprotronic\Drivers USB-FPA\XP,Vista,Win-7

(Figure 10) and press button **Next**.

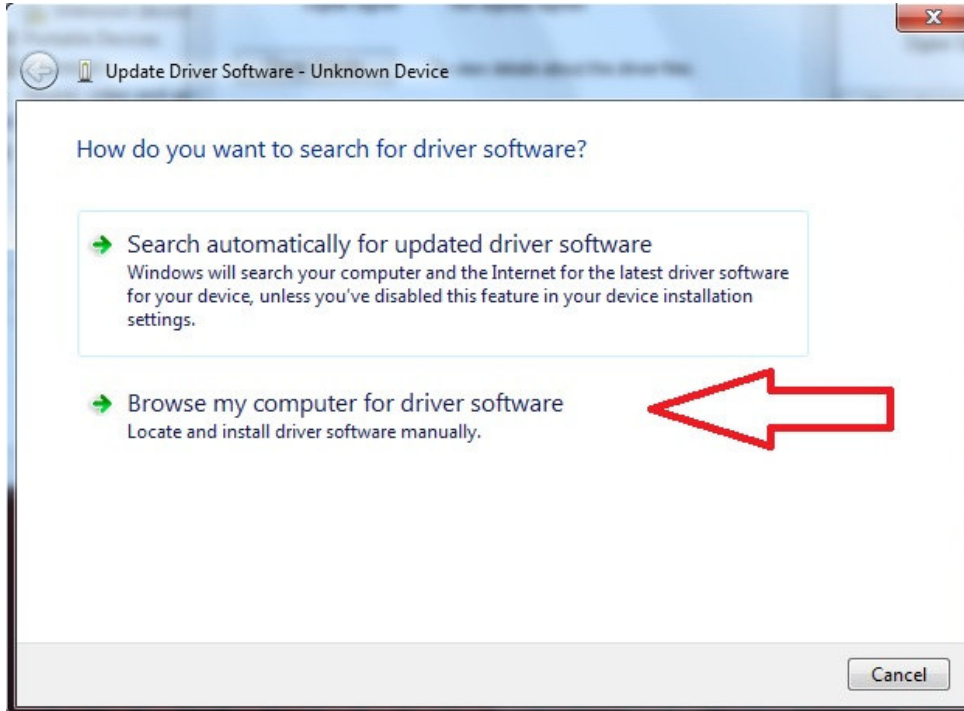


Figure 9

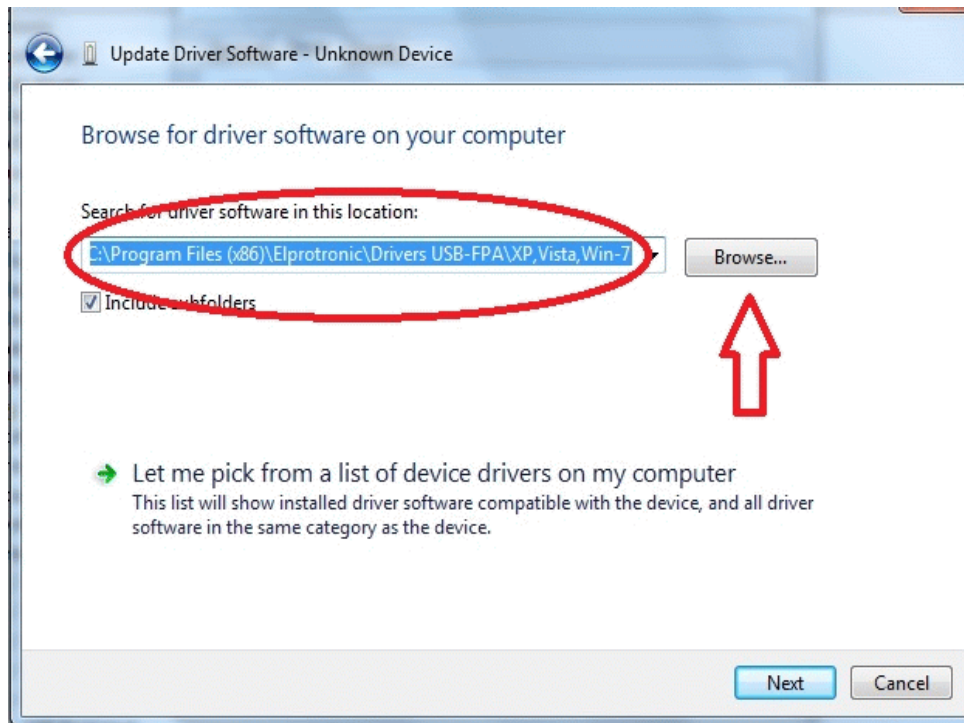


Figure 10

Driver **USB-FPA-BOOT (X64) Elprotronic** will be installed (Figure 12). That can take a minute or more. Press button **Close** and wait until the application driver is installed. That will be done automatically.

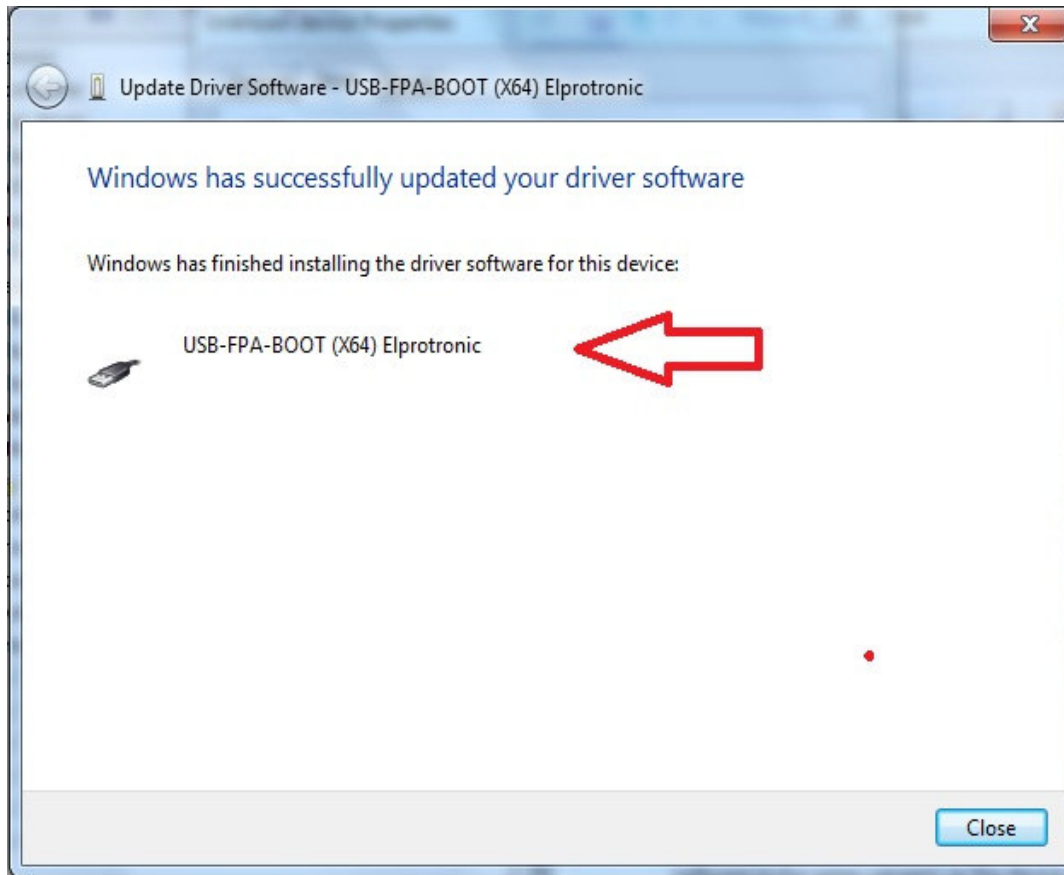


Figure 12

At the end the **USB-FPA (x64) Elprotronic** driver information will be displayed in the Device Manager in the **Universal Serial Bus controllers** group (Figure 13) without any warnings (Yellow ?) Driver is installed and USB-FPA adapter ready to be used.

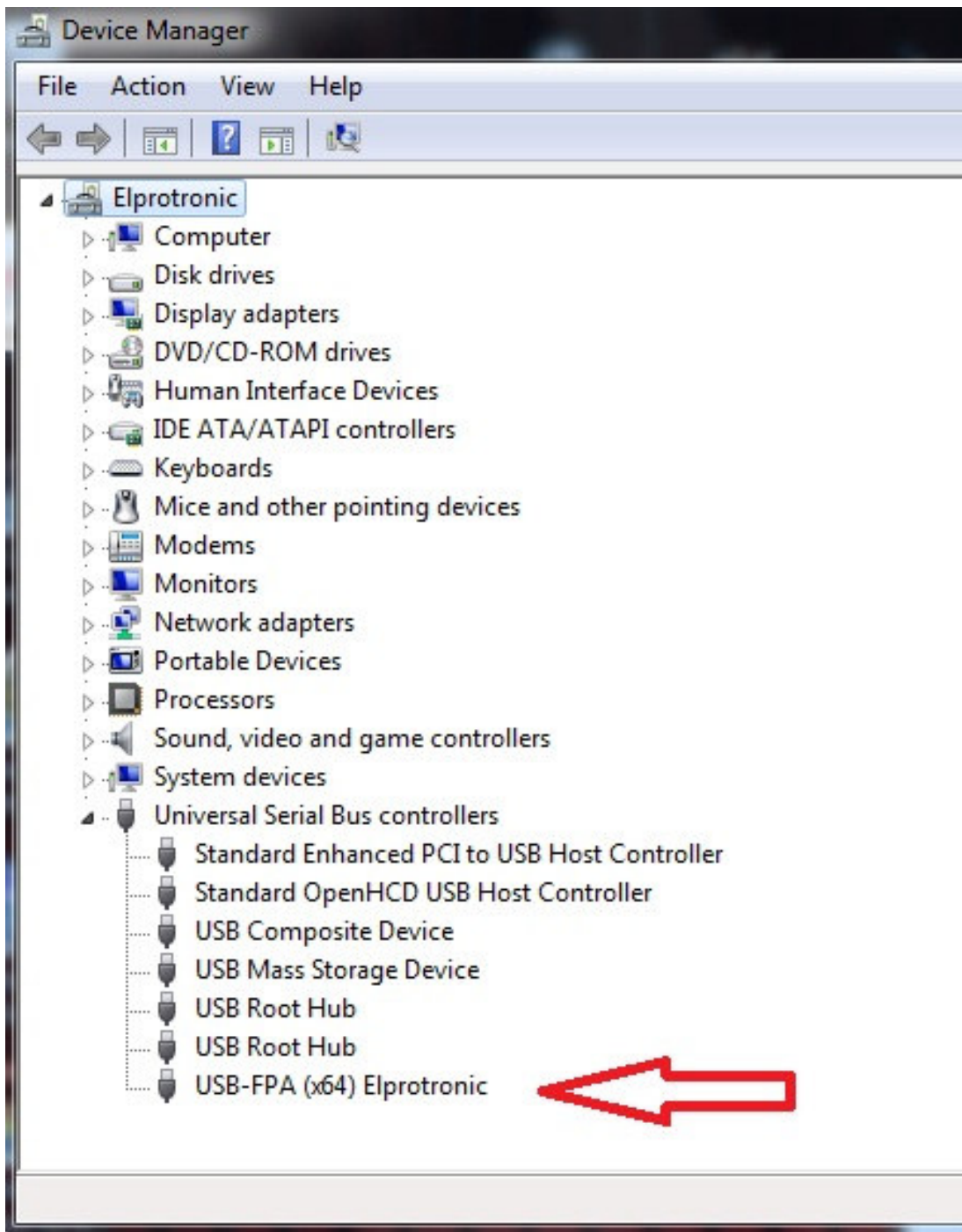


Figure 13

==== **Windows XP(32-bits), VISTA (32 bits), Win-7 (32-bits)** ====

2. The “*New hardware has been found*” - **USB-FPA-BOOT Elprotronic** should be displayed.

Follow the wizard instruction to install the drivers.

In the first Wizard dialogue screen (see Figure 14) select the “**Yes, this time only**” option.

2. In the second Wizard dialogue screen (see Figure 15) select the “**Instal from a list or specific location (Advanced)**” and press NEXT button.
3. Software will search the driver for the **USB-FPA-BOOT Elprotronic**. It can take one minute to find it. When the driver is found then the following warning will be displayed (Figure 16)



Figure 14



Figure 15

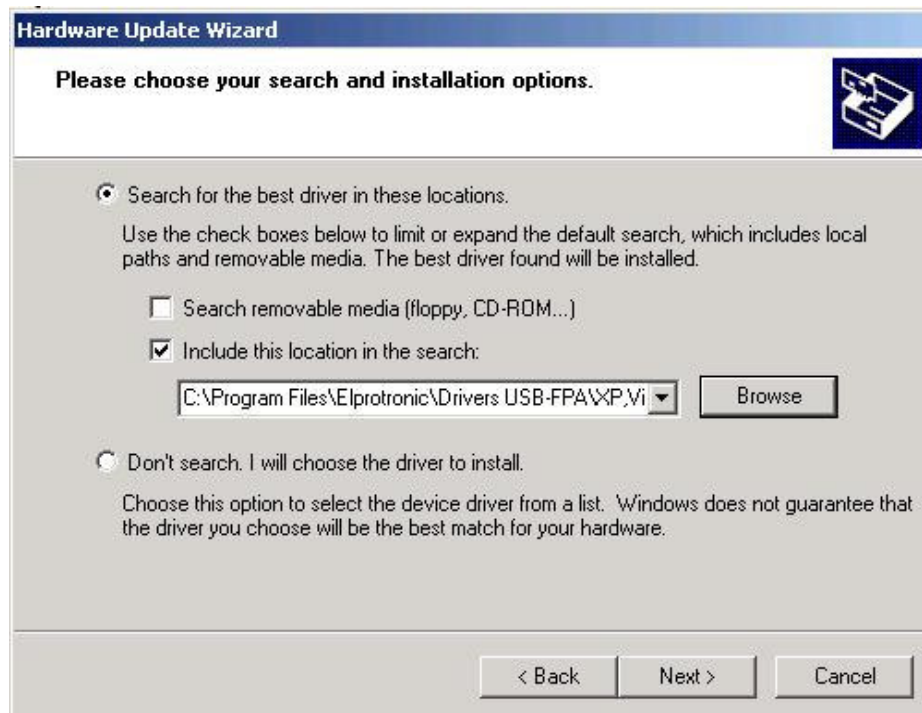


Figure 16

* - Select the Search for the best driver in these location :

x - Include this location in the search:

and using Browse button find the following location where the drivers are located

C:\Program Files\Elprotronic\Drivers USB-FPA\XP,Vista,Win-7

Press the *Next* button.

4. Ignore the following message (Figure 4) and press button “**Continue Anyway**”. The first **USB-FPA-BOOT Elprotronic** driver should be installed and following message displayed (Figure 17).

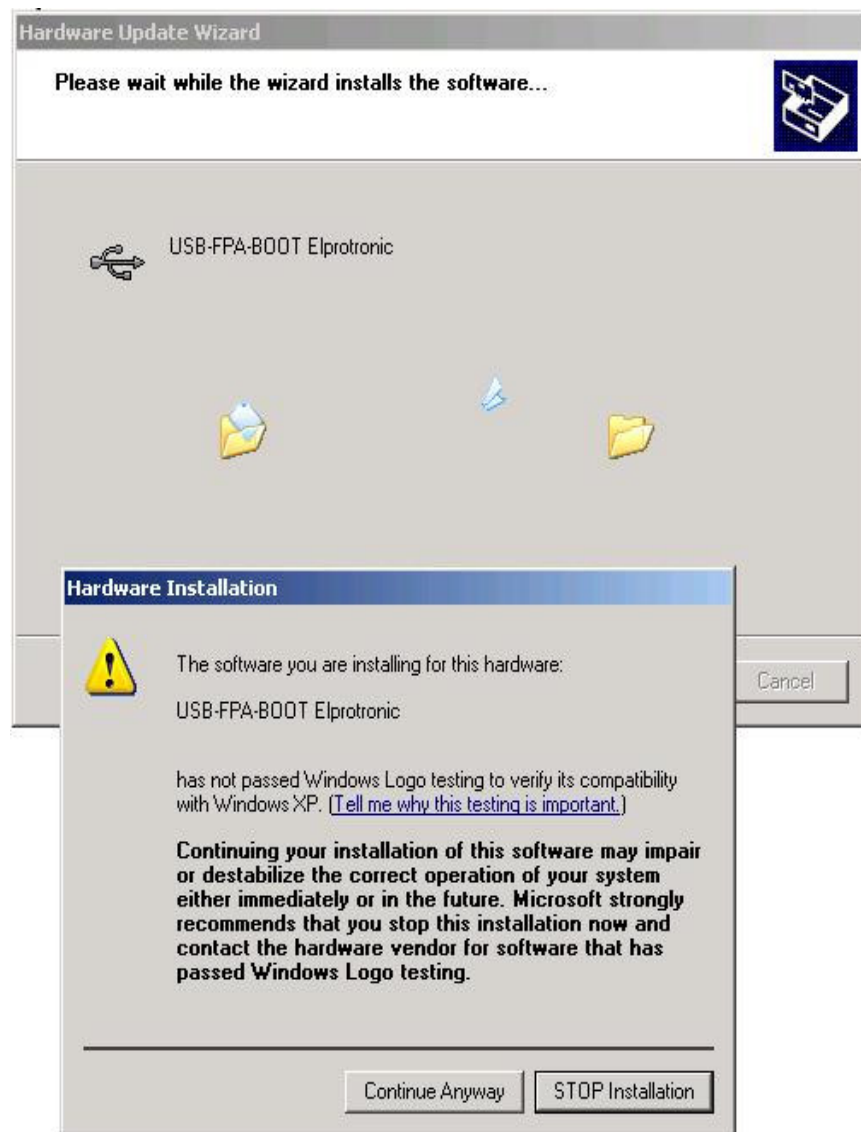


Figure 17

5. Following final message would be displayed (Figure 18). Press “**Finish**” button.



Figure 18

After a few seconds the second new hardware will be found - the

USB-FPA Elprotronic.

The second driver should be installed automatically. Please check the Device Manager should be displayed the **USB-FPA Elprotronic** without any yellow question mark, errors etc. (see Figure 19)

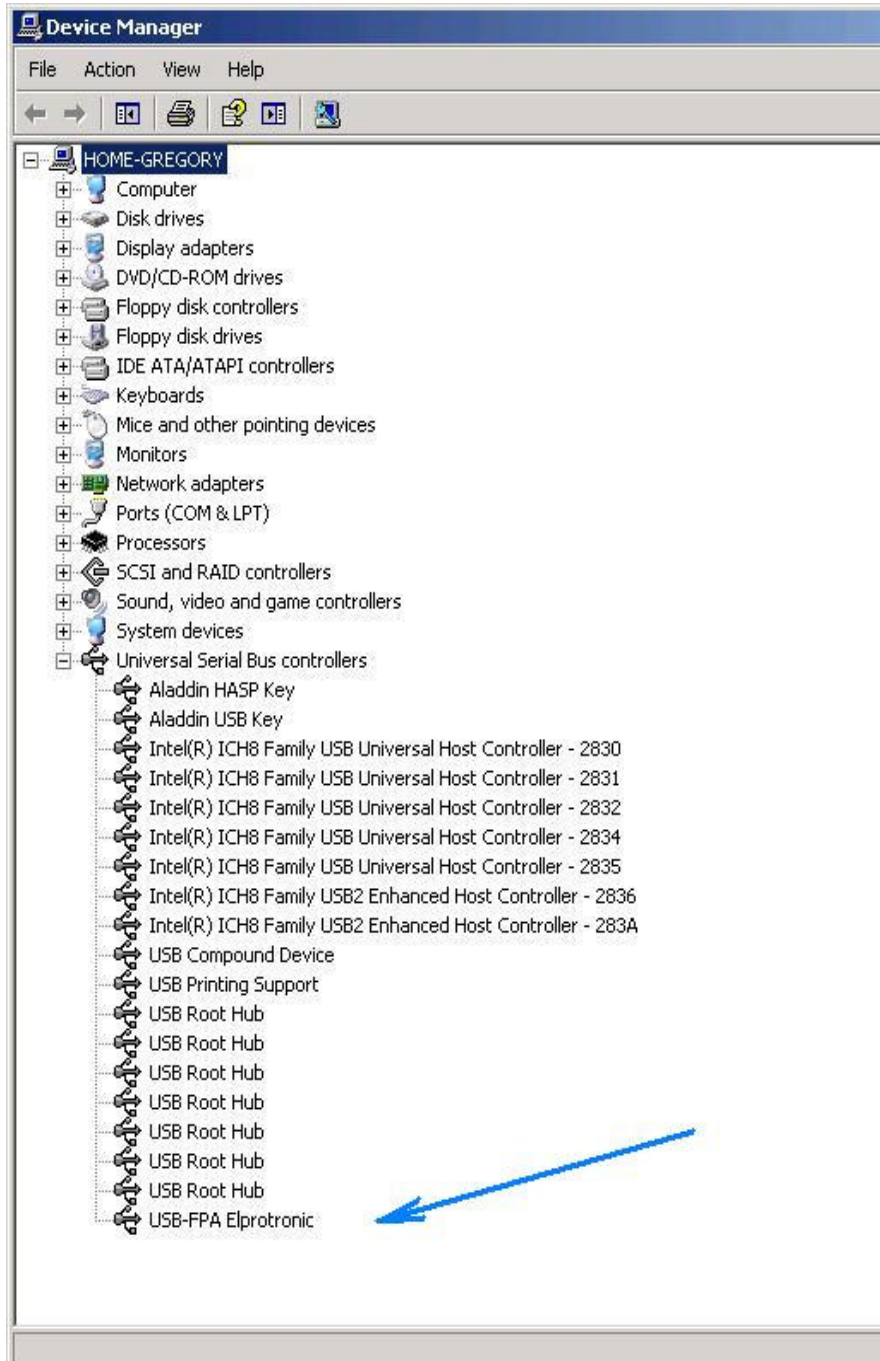


Figure 19

If from any reason the USB-FPA Elprotronic will be displayed with warning (Yellow ?) then click on the **USB-FPA Elprotronic** item, select Properties and update the driver - in the same way as it is described above. That can happen if in the PC was installed the old USB driver and the old driver has not been removed. If still is a problem, then underproperties select the

option *Uninstall driver*, unplug and plug again adapter, and when wizard starts, install a driver as described above. Make sure that under Device Manager the *USB-FPA Elrotronic* is displayed without any errors.

==== Windows - 2000, ME, 98-SE ====

2. The “*New hardware has been found*” should be displayed. Follow the wizard instruction to install the drivers.
3. Press ‘**Next**’ when the Device Wizard Driver screen appear.
4. Select the following option on the wizard screen:
* **select for a suitable driver for my device (recommended)**
and press ‘**Next**’.
5. Select the third option - “**Specify a location**” for a location of the Driver Files.
6. From the browser select a following directory
* for Windows 2000 OS:
C:\Program Files\Elprotronic\Drivers USB-FPA\W2K
* for Windows Millenium:
C:\Program Files\Elprotronic\Drivers USB-FPA\WinME
* for Windows 98 Second Edition
C:\Program Files\Elprotronic\Drivers USB-FPA\W98SE
and press ‘**Next**’.
7. Driver installation process will start.

Driver installation procedures should be done twice. Software will install two USB drivers - the Boot driver and the Application driver. Reboot computer on the end.

Very Important for users of the old version of the FlashPro430 / GangPro430 software.

The *X-Pro430 (FlashPro430 / GangPro430)* programming software (version 3.3-1 and up) is using new USB drivers. These USB drivers are not compatible with the old *X-Pro430* software (version 3.1 and below) also the new software is not compatible with the old USB drivers. Make sure that you install new drivers on your PC when you use the new our software package (*FlashPro430, GangPro430, API-DLL* or *MSP430.dll*). The current software package already removed the old USB drivers and installed the new USB drivers.

Drivers also can be replaced manually from

Windows-XP

C:\Program Files\Elprotronic\Drivers USB-FPA\XP,Vista,Win-7
to windows directory

C:\WINDOWS\system32\drivers

Following files should be replaced

usbepa0.sys
usbepb0.sys

The new USB drivers files have following size/date

usbepa0.sys	34kB	5/15/2006
usbepb0.sys	11kB	5/06/2006 or later

The old USB drivers files have following size/date

usbepa0.sys	27kB	9/16/2002
usbepb0.sys	15kB	11/30/2005

Windows-98SE, ME, 2000

Files from location

C:\Program Files\Elprotronic\Drivers USB-FPA\W98SE - for Win-98

or

C:\Program Files\Elprotronic\Drivers USB-FPA\WinME - for Win-ME

or

C:\Program Files\Elprotronic\Drivers USB-FPA\W2K - for Win-2000

to windows directory

C:\WINDOWS\system32\drivers

Following files should be replaced

usbepb0.sys	11kB	5/06/2006 or later
-------------	------	--------------------

When the first USB driver is replaced then disconnect programming adapter, connect it again and install or update the second driver. Driver should be taken from location

C:\Program Files\Elprotronic\Drivers USB-FPA\W98SE - for Win-98

Select the **USBEptD0.inf** file.

or

C:\Program Files\Elprotronic\Drivers USB-FPA\WinME - for Win-ME

Select the **USBEptA0.inf** file.

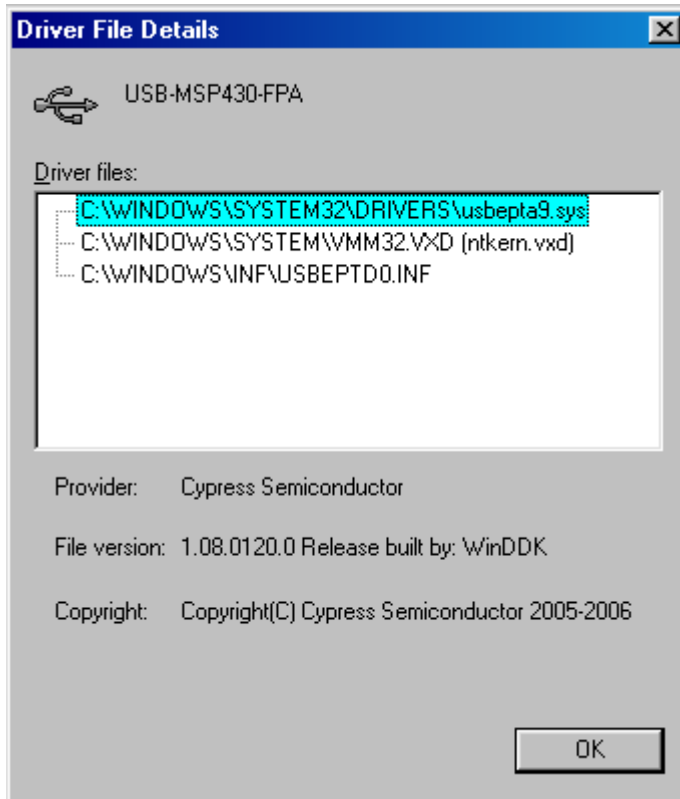
or

C:\Program Files\Elprotronic\Drivers USB-FPA\W2K - for Win-2000

Select the **USBEptA0.inf** file.

If driver is installed then following driver version should be displayed.

Attached example is for Win-98SE



Please inform us (support@elprotronic.com) if you find any problems with the new software package and new USB drivers.

Elprotronic Inc.
March-09-2010