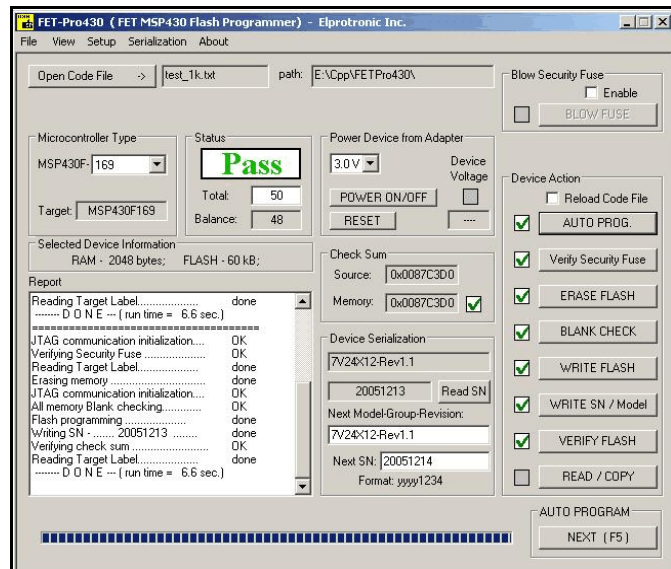


FET-Pro430 The MSP430 Programming Software

FET-Pro430: Inexpensive software alternative, using the **FET** hardware you have. Perfect in application where the programming speed is not critical. Software contains all features of the **FlashPro430** from Elprotronic..

FET-Pro430 programming software is a software package designed to operate with existing programming adapters provided by Texas Instruments (**MSP430-FET** -parallel port version- and **MSP-FET430UIF** -USB port version) and other vendors. The **FET-Pro430** can program Texas Instruments MSP430Fxx family of microcontrollers via JTAG interface, using the parallel or USB ports. The programming speed and the size of the code that can be programmed are dependent only on the interface adapter and the target device.

- * Support all MSP430Fxx microcontrollers
- * Blow the JTAG security fuse capability (with the MSP-FET430UIF adapter) .
- * No code size limitations.
- * Easy to use Windows™ based software.
- * Programmer accept TI (*.txt), Motorola (*.s19) and Intel (*.hex) data files for programming.
- * Combine code files capability.
- * Lock setup capability, useful in production.
- * Unique serial number assign capability. Software package can assign and automatically increment **serial number**, model type and revision. Serial Number with or without an automatically inserted current date can be stored in the FLASH memory in HEX, BCD or ASCII format. Log file capability allowing to review information about the flashed target devices.



To simplify production process, the programming software package can assign serial number, model type, and revision number. Each serial number is unique for each programmed device and is assigned automatically. Several serial number formats are available.

There are a number of erase/write options also available. This allows to erase/write all flash memory, or just the specified fragment of memory. This feature is very useful when only part of programmed data/code should be replaced. For example this feature can be used to download the serial number, calibration data or personality data without losing existing program code.

Updated September-30-2005



Elprotronic Inc.
91 Alpine Crescent
Richmond Hill, Ontario
LAS-1V9, CANADA

Email: info@elprotronic.com
Voice: 905-780-5789
Fax: 905-780-2414
www.elprotronic.com